

**AS9916**

FEDERAL SUPPLY CLASS  
5306

# NOTICE

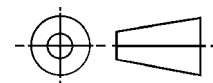
THIS DOCUMENT HAS BEEN TAKEN DIRECTLY FROM U.S. MILITARY SPECIFICATION MS9916(ASG), NOTICE 2 AND CONTAINS ONLY MINOR EDITORIAL AND FORMAT CHANGES REQUIRED TO BRING IT INTO CONFORMANCE WITH THE PUBLISHING REQUIREMENTS OF SAE TECHNICAL STANDARDS. THE INITIAL RELEASE OF THIS DOCUMENT IS INTENDED TO REPLACE MS9916(ASG), NOTICE 2. ANY PART NUMBERS ESTABLISHED BY THE ORIGINAL SPECIFICATION REMAIN UNCHANGED.

THE ORIGINAL MILITARY SPECIFICATION WAS ADOPTED AS AN SAE STANDARD UNDER THE PROVISIONS OF THE SAE TECHNICAL STANDARDS BOARD (TSB) RULES AND REGULATIONS (TSB 001) PERTAINING TO ACCELERATED ADOPTION OF GOVERNMENT SPECIFICATIONS AND STANDARDS. TSB RULES PROVIDE FOR (A) THE PUBLICATION OF PORTIONS OF UNREVISED GOVERNMENT SPECIFICATIONS AND STANDARDS WITHOUT CONSENSUS VOTING AT THE SAE COMMITTEE LEVEL, AND (B) THE USE OF THE EXISTING GOVERNMENT SPECIFICATION OR STANDARD FORMAT.

UNDER DEPARTMENT OF DEFENSE POLICIES AND PROCEDURES, ANY QUALIFICATION REQUIREMENTS AND ASSOCIATED QUALIFIED PRODUCTS LISTS ARE MANDATORY FOR DOD CONTRACTS. ANY REQUIREMENTS RELATING TO QUALIFIED PRODUCTS LISTS (QPL'S) HAS NOT BEEN ADOPTED BY SAE AND IS NOT PART OF THIS TECHNICAL REPORT.

SAENORM.COM : Click to view the full PDF of as9916

THIRD ANGLE PROJECTION



ISSUED 1998-05 REAFFIRMED 2003-10

PREPARED BY COMMITTEE E-25

PROCUREMENT SPECIFICATION: NONE

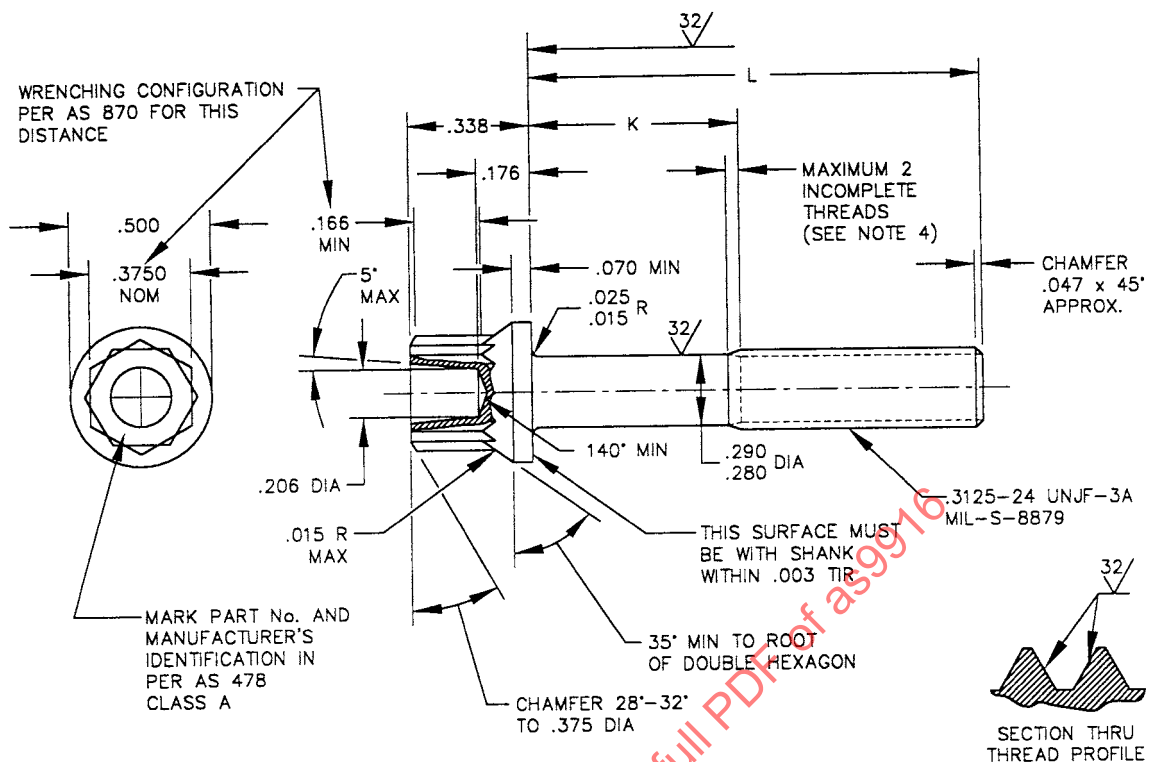
**SAE Aerospace**  
An SAE International Group

## AEROSPACE STANDARD

BOLT, MACHINE - DOUBLE HEXAGON EXTENDED  
WASHER HEAD, PD SHANK, STEEL AMS 6322,  
CADMIUM PLATED, .3125-24 UNJF-3A

**AS9916**  
SHEET 1 OF 3

# AS9916



PART No.	L	K	APPROX. WEIGHT LB/100
MS9916-04	.500	.088-.108	2.08
MS9916-05	.562	.088-.108	2.19
MS9916-06	.625	.088-.108	2.30
MS9916-07	.688	.088-.108	2.42
MS9916-08	.750	.088-.108	2.53
MS9916-09	.812	.088-.108	2.64
MS9916-10	.875	.088-.108	2.75
MS9916-11	.938	.088-.108	2.87
MS9916-12	1.000	.088-.125	2.98
MS9916-13	1.062	.128-.188	3.09
MS9916-14	1.125	.190-.250	3.20
MS9916-15	1.188	.252-.312	3.32
MS9916-16	1.250	.315-.375	3.43
MS9916-17	1.312	.378-.438	3.54
MS9916-18	1.375	.440-.500	3.65
MS9916-19	1.438	.502-.562	3.77
MS9916-20	1.500	.565-.625	3.88
MS9916-21	1.562	.628-.688	3.99

PART No.	L	K	APPROX. WEIGHT LB/100
MS9916-22	1.625	.690-.750	4.11
MS9916-23	1.688	.752-.812	4.22
MS9916-24	1.750	.815-.875	4.33
MS9916-25	1.812	.878-.938	4.44
MS9916-26	1.875	.940-1.000	4.56
MS9916-27	1.938	1.002-1.062	4.67
MS9916-28	2.000	1.065-1.125	4.78
MS9916-29	2.125	1.190-1.250	5.01
MS9916-30	2.250	1.305-1.375	5.23
MS9916-31	2.375	1.440-1.500	5.46
MS9916-32	2.500	1.565-1.625	5.69
MS9916-33	2.625	1.690-1.750	5.91
MS9916-34	2.750	1.815-1.875	6.14
MS9916-35	2.875	1.940-2.000	6.36
MS9916-36	3.000	2.065-2.125	6.59
MS9916-37	3.125	2.190-2.250	6.81
MS9916-38	3.250	2.315-2.375	7.04
MS9916-39	3.375	2.440-2.500	7.27
MS9916-40	3.500	2.565-2.625	7.49
MS9916-41	3.625	2.690-2.750	7.72
MS9916-42	3.750	2.815-2.875	7.94

PART No.	L	K	APPROX. WEIGHT LB/100
MS9916-43	3.875	2.940-3.000	8.17
MS9916-44	4.000	3.065-3.125	8.40
MS9916-45	4.125	3.190-3.250	8.62
MS9916-46	4.250	3.315-3.375	8.85
MS9916-47	4.375	3.440-3.500	9.07
MS9916-48	4.500	3.565-3.625	9.30
MS9916-49	4.625	3.690-3.750	9.52
MS9916-50	4.750	3.815-3.875	9.75
MS9916-51	4.875	3.940-4.000	9.98
MS9916-52	5.000	4.065-4.125	10.20
MS9916-53	5.125	4.190-4.250	10.43
MS9916-54	5.250	4.315-4.375	10.65
MS9916-55	5.375	4.440-4.500	10.88
MS9916-56	5.500	4.565-4.625	11.10
MS9916-57	5.625	4.690-4.750	11.33
MS9916-58	5.750	4.815-4.875	11.56
MS9916-59	5.875	4.940-5.000	11.78
MS9916-60	6.000	5.065-5.125	12.01