

AS85049/34

FEDERAL SUPPLY CLASS
5935

NOTICE

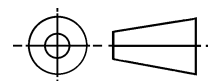
THIS DOCUMENT HAS BEEN TAKEN DIRECTLY FROM U.S. MILITARY SPECIFICATION MIL-C-85049/34A AND CONTAINS ONLY MINOR EDITORIAL AND FORMAT CHANGES REQUIRED TO BRING IT INTO CONFORMANCE WITH THE PUBLISHING REQUIREMENTS OF SAE TECHNICAL STANDARDS. THE INITIAL RELEASE OF THIS DOCUMENT IS INTENDED TO REPLACE MIL-C-85049/34A. ANY PART NUMBERS ESTABLISHED BY THE ORIGINAL SPECIFICATION REMAIN UNCHANGED.

THE ORIGINAL MILITARY SPECIFICATION WAS ADOPTED AS AN SAE STANDARD UNDER THE PROVISIONS OF THE SAE TECHNICAL STANDARDS BOARD (TSB) RULES AND REGULATIONS (TSB 001) PERTAINING TO ACCELERATED ADOPTION OF GOVERNMENT SPECIFICATIONS AND STANDARDS. TSB RULES PROVIDE FOR (A) THE PUBLICATION OF PORTIONS OF UNREVISED GOVERNMENT SPECIFICATIONS AND STANDARDS WITHOUT CONSENSUS VOTING AT THE SAE COMMITTEE LEVEL, AND (B) THE USE OF THE EXISTING GOVERNMENT SPECIFICATION OR STANDARD FORMAT.

UNDER DEPARTMENT OF DEFENSE POLICIES AND PROCEDURES, ANY QUALIFICATION REQUIREMENTS AND ASSOCIATED QUALIFIED PRODUCTS LISTS ARE MANDATORY FOR DOD CONTRACTS. ANY REQUIREMENT RELATING TO QUALIFIED PRODUCTS LISTS (QPL'S) HAS NOT BEEN ADOPTED BY SAE AND IS NOT PART OF THIS SAE TECHNICAL DOCUMENT.

SAENORM.COM : Click to view the full PDF of as85049 - 34

THIRD ANGLE PROJECTION



ISSUED 2001-07

PREPARED BY SAE SUBCOMMITTEE AE-8C1

SAE The Engineering Society
For Advancing Mobility
Land Sea Air and Space
INTERNATIONAL
400 Commonwealth Drive, Warrendale, PA 15096-0001

AEROSPACE STANDARD

CONNECTOR ACCESSORIES, ELECTRICAL,
BACKSHELL, NONENVIRONMENTAL, THREADED
ADAPTER, CATEGORY 3C (FOR MIL-C-26482 SERIES I
JAM NUT RECEPTACLE CONNECTOR)

AS85049/34
SHEET 1 OF 4

THE REQUIREMENTS FOR ACQUIRING THE PRODUCT DESCRIBED HEREIN SHALL CONSIST OF THIS SPECIFICATION SHEET AND THE ISSUE OF THE FOLLOWING SPECIFICATION LISTED IN THAT ISSUE OF THE DEPARTMENT OF DEFENSE INDEX OF SPECIFICATIONS AND STANDARDS (DODISS) SPECIFIED IN THE SOLICITATION: MIL-C-85049.

INACTIVE FOR NEW DESIGN EQUIPMENT OR
MODIFICATION OF EXISTING EQUIPMENT.

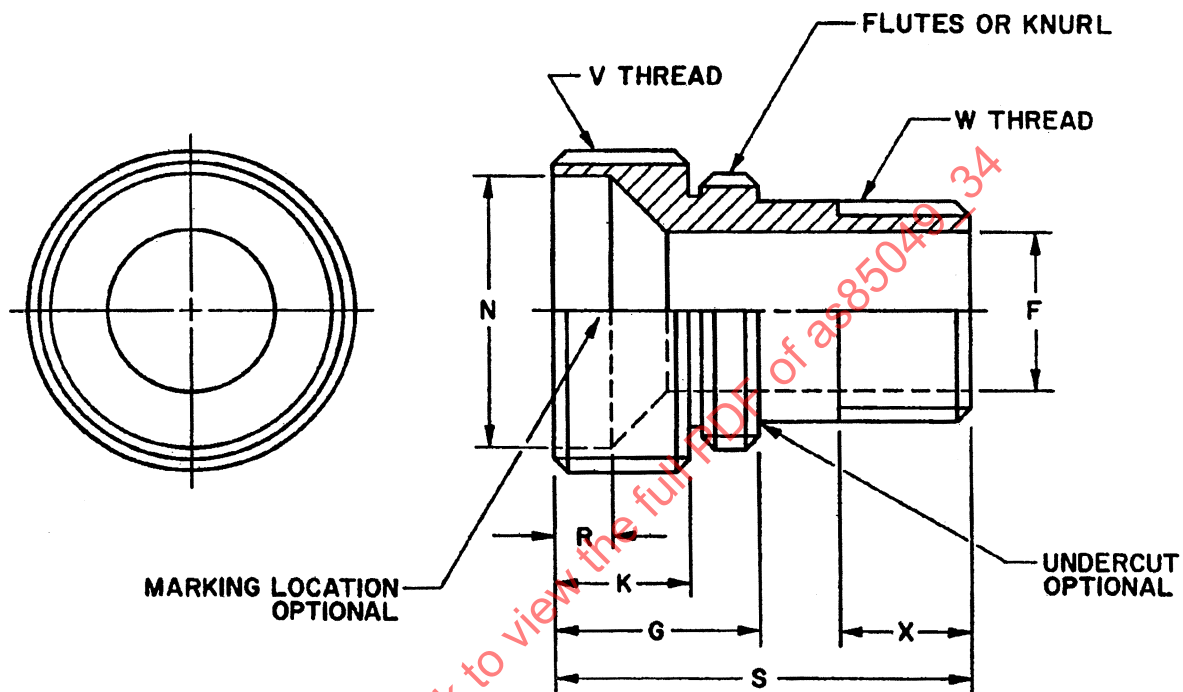


FIGURE 1. CONFIGURATION AND DIMENSIONS.

TABLE I. DIMENSIONS.

Shell Size	F +.005 -.001 Dia	G +.001 -.016	K +.017 -.000	N +.010 -.011 Dia	R +.016	S Max	V	W	X Min Full Thread
							Thread UNEF Class 2A		
8	.322	.391	.256	.500	.094	.812	.625-24	.4375-28	.250
10	.439			.609			.750-20	.5625-24	
12	.564			.734			.875-20	.6875-24	
14	.668			.859			1.000-20	.8125-20	
16	.793			.969			1.125-18	.9375-20	
18	.910			1.109			1.250-18	1.0625-18	
20	1.025	.422	.302	1.219	.125	.906	1.375-18	1.1875-18	.312
22	1.150			1.344			1.500-18	1.3125-18	
24	1.275			1.469		.937	1.625-18	1.4375-18	

INCH	mm	INCH	mm	INCH	mm
0.001	0.03	0.5625	14.29	1.000	25.40
0.005	0.13	0.564	14.33	1.025	26.03
0.010	0.25	0.609	15.47	1.0625	26.99
0.011	0.28	0.625	15.88	1.109	28.17
0.016	0.41	0.668	16.97	1.125	28.58
0.017	0.43	0.6875	17.46	1.150	29.21
0.094	2.39	0.734	18.64	1.1875	30.16
0.125	3.18	0.750	19.05	1.219	30.96
0.250	6.35	0.793	20.14	1.250	31.75
0.256	6.50	0.812	20.62	1.275	32.39
0.302	7.67	0.8125	20.64	1.3125	33.34
0.312	7.92	0.859	21.82	1.344	34.14
0.322	8.18	0.875	22.22	1.375	34.93
0.391	9.93	0.906	23.01	1.4375	36.51
0.422	10.72	0.910	23.11	1.469	37.31
0.4375	11.11	0.937	23.80	1.500	38.10
0.439	11.15	0.9375	23.81	1.625	41.28
0.500	12.70	0.969	24.61		