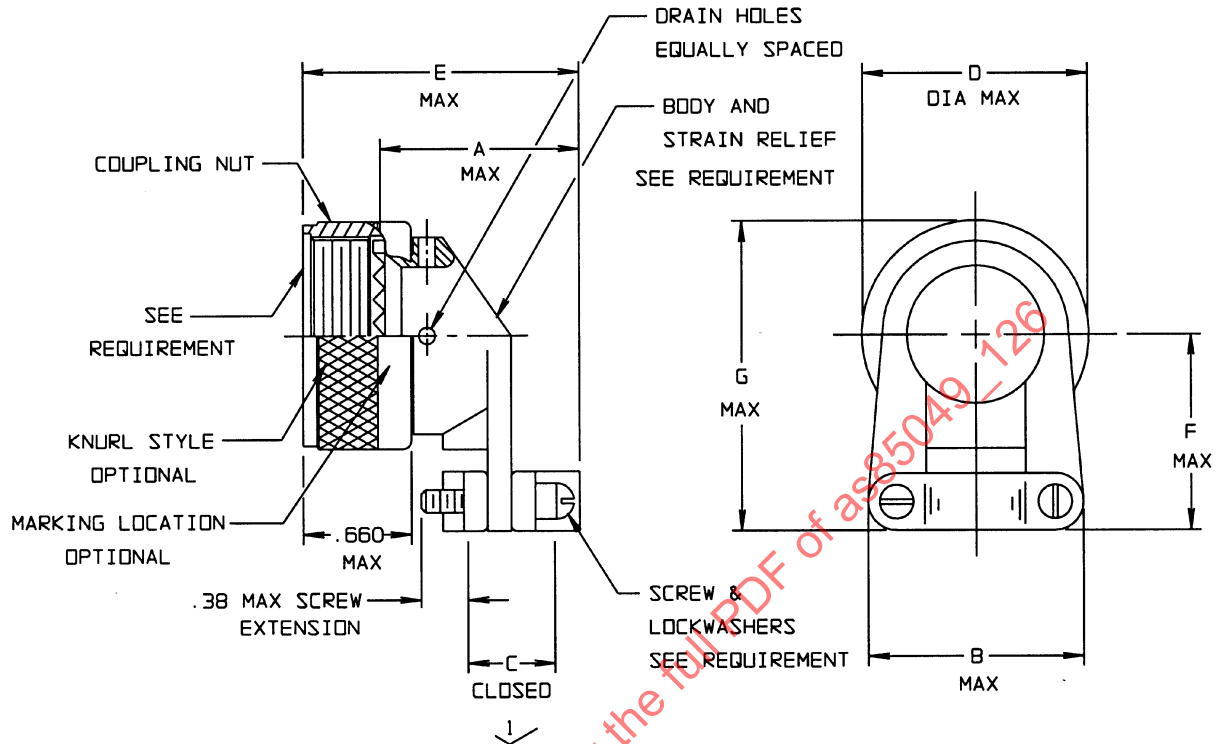


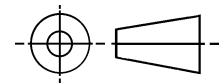
THE REQUIREMENTS FOR ACQUIRING THE ACCESSORIES DESCRIBED HEREIN SHALL CONSIST OF THIS SPECIFICATION AND THE LATEST ISSUE OF SAE AS85049.



1/ CABLE ENTRY IS MEASURED WITH SADDLE BARS CLOSED AND BOTTOMED ON CLAMP EARS.

FIGURE 1: DIMENSION AND CONFIGURATION

THIRD ANGLE PROJECTION



ISSUED 2003-06

CUSTODIAN: SAE AE-8/AE-8C1

**SAE Aerospace**  
An SAE International Group

### AEROSPACE STANDARD

CONNECTOR ACCESSORIES, ELECTRICAL, STRAIN RELIEF,  
90° SELF-LOCKING AND NON-SELF-LOCKING, CATEGORY 4C  
(FOR MIL-DTL-38999 SERIES III AND IV CONNECTORS)

**AS85049/126**  
SHEET 1 OF 4

TABLE I. SHELL SIZES AND DIMENSIONS

CONNECTOR SHELL SIZE	SHELL SIZE CODE (REF)	A MAX LENGTH	B MAX	C ± .031 DIM ↓	D MAX DIA	E MAX OVERALL LENGTH	F MAX	G MAX	SCREW SIZE (REF)
09	A	.86 (21.8)	.88 (22.4)	.219 (5.56)	.858 (21.79)	1.14 (29.0)	.81 (20.6)	1.24 (31.5)	6-32
11	B	.94 (23.9)	.94 (23.9)	.264 (6.71)	.984 (24.99)	1.22 (31.0)	.87 (22.1)	1.36 (33.5)	6-32
13	C	1.14 (29.0)	1.12 (28.4)	.344 (8.74)	1.157 (29.39)	1.42 (36.1)	.93 (23.6)	1.51 (38.4)	6-32
15	D	1.20 (30.5)	1.19 (30.2)	.460 (11.68)	1.279 (32.49)	1.48 (37.6)	.99 (25.1)	1.63 (41.4)	6-32
17	E	1.34 (34.0)	1.44 (36.6)	.545 (13.84)	1.406 (35.71)	1.62 (41.1)	1.06 (26.9)	1.76 (44.7)	6-32
19	F	1.46 (37.1)	1.56 (39.6)	.615 (15.62)	1.516 (34.50)	1.74 (44.2)	1.23 (31.2)	1.99 (50.5)	8-32
21	G	1.58 (40.1)	1.69 (42.9)	.698 (17.73)	1.642 (41.70)	1.86 (47.2)	1.30 (33.0)	2.12 (53.8)	8-32
23	H	1.71 (43.4)	1.75 (44.5)	.780 (19.81)	1.768 (44.91)	1.99 (50.5)	1.36 (34.5)	2.24 (56.9)	8-32
25	J	1.83 (46.5)	1.88 (47.8)	.850 (21.59)	1.869 (47.98)	2.11 (53.6)	1.42 (36.1)	2.35 (59.7)	8-32

↓ CABLE ENTRY IS MEASURED WITH SADDLE BARS  
CLOSED AND BOTTOMED ON CLAMP EARS.

## NOTES:

1. DIMENSIONS ARE IN INCHES.
2. DIMENSIONS APPLY AFTER PLATING.
3. METRIC EQUIVALENTS ARE GIVEN FOR GENERAL INFORMATION ONLY AND ARE BASED ON 25.4 mm = 1 INCH.
4. MILLIMETERS ARE IN PARENTHESES.
5. IF SCREWS WITH WIRE HOLES ARE REQUIRED PROCURER MAY REPLACE WITH MS35275 SCREWS AND MS35338 LOCKWASHERS.

## REQUIREMENTS:

## CONNECTOR ACCESSORY DESIGN AND CONSTRUCTION:

1. DIMENSIONS AND CONFIGURATION: SEE FIGURE 1 AND TABLE I.
2. INTERFACE DIMENSIONS SHALL CONFORM TO SAE AS85049, FIGURE 3
3. ACCESSORIES CONSIST OF A COUPLING NUT AND STRAIN RELIEF THE COUPLING NUT SHALL BE CAPTIVATED TO, AND ROTABLE ON THE BODY.
4. DETENTED SELF-LOCKING PROVIDES A POSITIVE AUDIBLE DETENTED COUPLING.
5. THE STRAIN RELIEF SHALL ACCOMMODATE SAE AS85049/127 BUSHING STRIP
6. CLAMPS SHALL HAVE NO PROTRUSIONS OR SHARP EDGES WHICH MAY PINCH CABLE.
7. MATERIAL AND FINISH: SEE TABLE II. ACCESSORIES SHALL BE AS SHOWN IN TABLE II.
8. CLAMP, SCREWS AND LOCK WASHERS: 300 SERIES CORROSION-RESISTANT STEEL, PASSIVATE.
9. SELF-LOCKING DEVICE: CORROSION RESISTANT MATERIAL.

TABLE II. MATERIAL AND FINISH

FIGURE	MATERIAL	FINISH
1	ALUMINUM ALLOY IN ACCORDANCE WITH SAE-AS85049	A N 1/ W 2/
	CORROSION RESISTANT STEEL 300 SERIES IN ACCORDANCE WITH SAE-AMS-763	S

- 1/ NOT FOR NAVY USE. AIR FORCE USE IS FOR SPACE APPLICATIONS ONLY. W IS THE PREFERRED FINISH.
- 2/ W IS NOT FOR USE IN SPACE APPLICATION.

## SELF-LOCKING DEVICES DESIGN AND CONSTRUCTION:

1. COUPLINGS WITH SELF-LOCKING DEVICES SHALL MEET ALL THE REQUIREMENTS SPECIFIED HEREIN FOR ITS SPECIFIC CATEGORY AND THE FOLLOWING ADDITIONAL TEST:
  - A. LIFE CYCLE: SEE AS85049 PARA 4.6.15
  - B. VIBRATION: SEE AS85049 PARA 3.5.4.1