

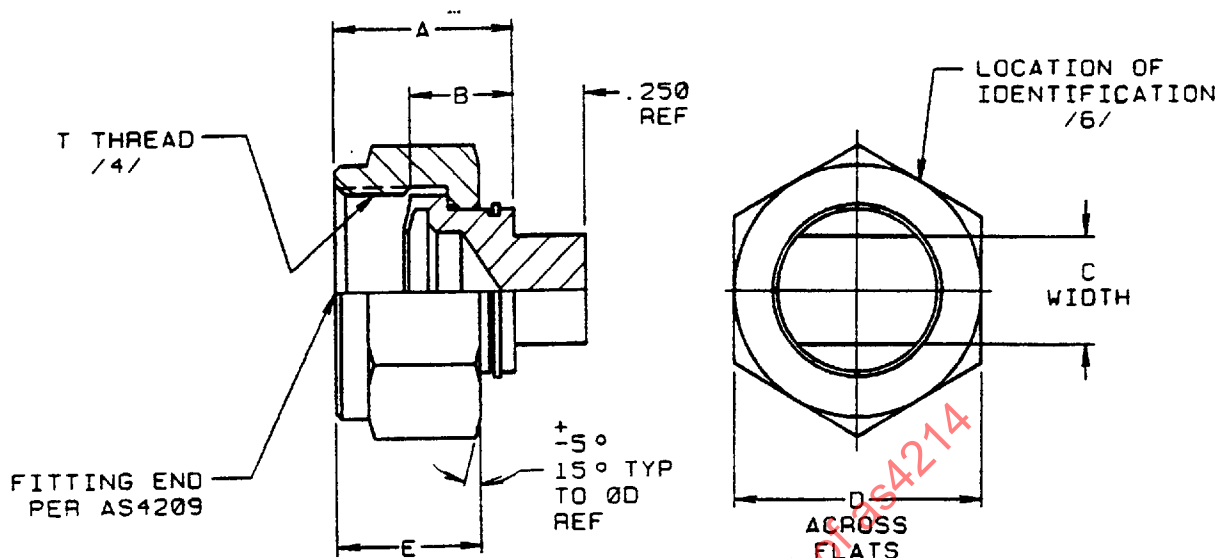
AS4214FEDERAL SUPPLY CLASS
4730

FIGURE 1

TABLE 1A - DIMENSIONS A-D

BASIC NO. AS4214 /12/ SIZE CODE	(NOMINAL TUBE SIZE)	T THREAD	A REF	B	C ±.020	D REF
03	.188	.3750-28 UNJS	.545	.354	.188	.500
04	.250	.4375-24 UNJS	.579	.350	.188	.562
05	.312	.5000-24 UNJS	.584	.350	.250	.625
06	.375	.5625-20 UNJS	.643	.390	.250	.688
08	.500	.7188-20 UNJS	.635	.365	.375	.875
10	.625	.8438-18 UNJS	.696	.365	.375	1.000
12	.750	1.0000-16 UNJ	.763	.396	.375	1.125
14	.875	1.1250-16 UNJ	.825	.455	.500	1.375
16	1.000	1.2500-14 UNJS	.881	.471	.500	1.500
20	1.250	1.5781-14 UNJS	.952	.541	.500	1.875
24 /7/	1.500	1.8438-14 UNJS	1.052	.558	.500	2.125

CUSTODIAN: SAE G-3/G-3B

PROCUREMENT SPECIFICATION: /5/ MIL-F-85421

SAE The Engineering Society
For Advancing Mobility
Land Sea Air and Space
INTERNATIONAL
400 Commonwealth Drive, Warrendale, PA 15096-0001

AEROSPACE STANDARDFITTING, CAP ASSEMBLY, BEAM SEAL,
FEMALE, 4000 psi, HYDRAULIC**AS4214**
SHEET 1 OF 2

SAE Technical Standards Board Rules provide that: "This report is published by SAE to advance the state of technical and engineering sciences. The use of this report is entirely voluntary, and its applicability and suitability for any particular use, including any patent infringement arising therefrom, is the sole responsibility of the user." SAE reviews each technical report at least every five years at which time it may be reaffirmed, revised, or cancelled. SAE invites your written comments and suggestions.