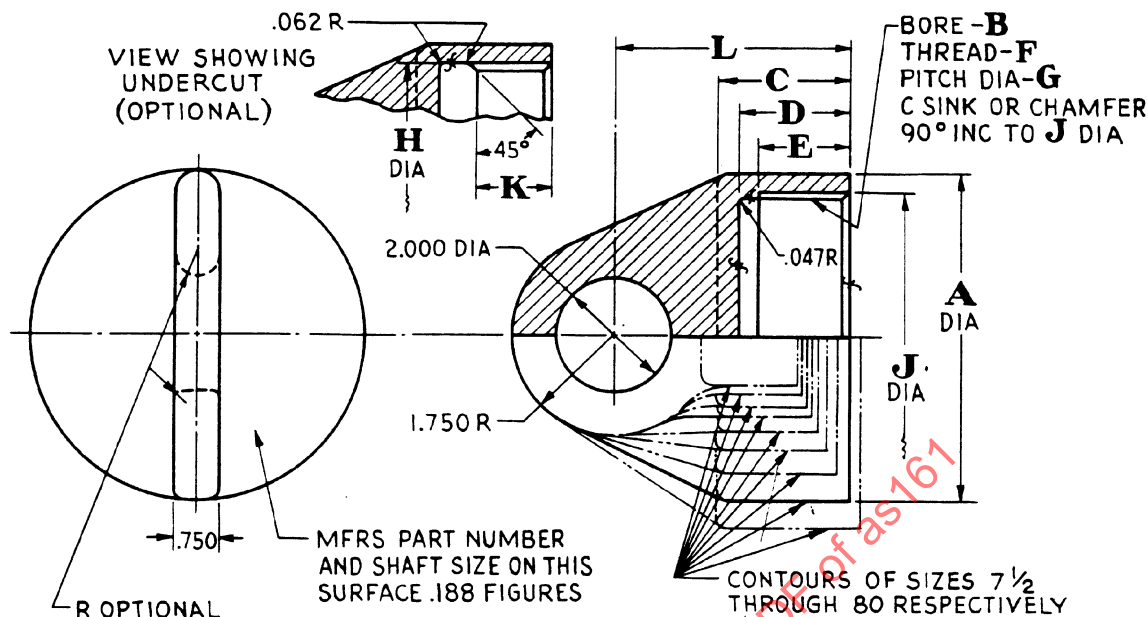


AS161



REF	LIMITS	PROPELLER SHAFT SIZE AND PART DASH NUMBER								
		7½	10	20	30	40	50	60	70	80
<b>A</b>	MIN	1.813	2.125	2.500	2.812	3.375	4.062	4.875	5.750	6.750
<b>B</b>		1.2848	1.5973	1.9723	2.2223	2.7223	3.3473	4.1147	4.9897	5.8647
<b>B</b>	TOLER	$\begin{smallmatrix} +.0090 \\ -.0000 \end{smallmatrix}$	$\begin{smallmatrix} +.0090 \\ -.0000 \end{smallmatrix}$	$\begin{smallmatrix} +.0090 \\ -.0000 \end{smallmatrix}$	$\begin{smallmatrix} +.0090 \\ -.0000 \end{smallmatrix}$	$\begin{smallmatrix} +.0090 \\ -.0000 \end{smallmatrix}$	$\begin{smallmatrix} +.0090 \\ -.0000 \end{smallmatrix}$	$\begin{smallmatrix} +.0148 \\ -.0000 \end{smallmatrix}$	$\begin{smallmatrix} +.0148 \\ -.0000 \end{smallmatrix}$	$\begin{smallmatrix} +.0148 \\ -.0000 \end{smallmatrix}$
<b>C</b>	MIN	1.391	1.391	1.641	1.641	1.672	1.953	2.219	2.344	2.438
<b>D</b>		1.180	1.120	1.360	1.340	1.340	1.620	1.850	1.980	2.040
<b>E</b>	MIN FULL THD	.922	.922	.995	1.010	1.010	1.365	1.550	1.550	1.550
<b>F</b>		1.375-12	1.6875-12	2.0625-12	2.3125-12	2.8125-12	3.4375-12	4.250-8	5.125-8	6.000-8
<b>F</b>	CLASS	N-3	NS-3	NS-3	NS-3	NS-3	NS-3	N-3	NS-3	N-3
<b>G</b>		1.3209	1.6334	2.0084	2.2584	2.7584	3.3834	4.1688	5.0438	5.9188
<b>G</b>	TOLER	$\begin{smallmatrix} +.0040 \\ -.0000 \end{smallmatrix}$	$\begin{smallmatrix} +.0046 \\ -.0000 \end{smallmatrix}$	$\begin{smallmatrix} +.0048 \\ -.0000 \end{smallmatrix}$	$\begin{smallmatrix} +.0049 \\ -.0000 \end{smallmatrix}$	$\begin{smallmatrix} +.0051 \\ -.0000 \end{smallmatrix}$	$\begin{smallmatrix} +.0053 \\ -.0000 \end{smallmatrix}$	$\begin{smallmatrix} +.0096 \\ -.0000 \end{smallmatrix}$	$\begin{smallmatrix} +.0099 \\ -.0000 \end{smallmatrix}$	$\begin{smallmatrix} +.0102 \\ -.0000 \end{smallmatrix}$
<b>H</b>		$\begin{smallmatrix} +.020 \\ -.000 \end{smallmatrix}$	1.406	1.688	2.063	2.344	2.844	3.469	4.302	5.172
<b>J</b>			1.400	1.710	2.080	2.330	2.830	3.460	4.270	5.145
<b>K</b>			.640	.580	.800	.810	.810	1.140	1.350	1.350
<b>L</b>			2.875	2.875	3.375	3.375	3.375	3.375	4.000	4.000

**SAE100**  
Leading Our World In Motion

SAE values your input. To provide feedback on this Technical Report, please visit  
<http://www.sae.org/technical/standards/AS161>

PREPARED BY SAE COMMITTEE EG-1, AEROSPACE PROPULSION SYSTEMS SUPPORT EQUIPMENT

**SAE Aerospace**  
An SAE International Group

**AEROSPACE STANDARD**

LIFTING EYE - PROPELLER SHAFT

**AS161**  
SHEET 1 OF 2